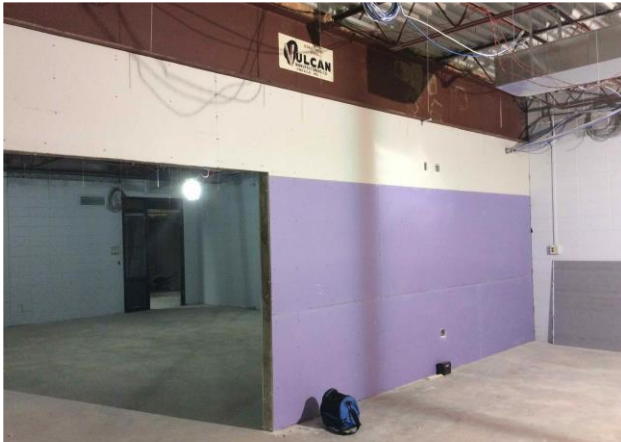


# Construction Weekly Update

---

Week of June 15th, 2020

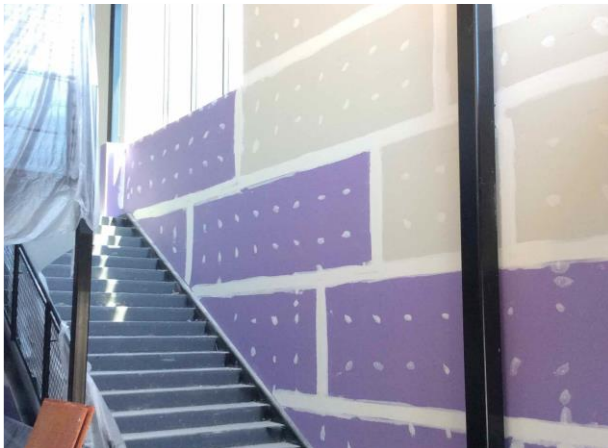
School District of Manawa



High School Collaboration



Tech Ed Classrooms



Fitness Center Atrium



Fitness Center Egress Stair

## Update

The fitness center egress stairs were poured, metal panels were installed, the drywall in the atrium was completed, and the lighting fixtures were installed. The main entrance of the school is prepped for the concrete pouring of the stairs. The middle school collaboration framing was completed. Painting, electrical and mechanical rough ins continued to make progress. The High School collaboration framing and drywall was completed. Floors for underground plumbing were cut in the tech ed classrooms and the new boy's bathroom walls were completed.

## About Hoffman

Hoffman Planning, Design & Construction, Inc. is an integrated Total Project Management firm based in Appleton, Wisconsin. We partner with our clients to create innovative designs and build high quality, functional, attractive, energy efficient facilities at costs at or below projects delivered using traditional design and construction methods. Currently in our fifth generation of leadership, Hoffman continues to deliver the same expert service and superior value our clients have come to appreciate.